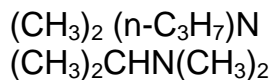


Product data sheet

Mixture of Dimethylisopropylamine and Dimethylpropylamine (DMPA/ DMIPA 50/50)



M= 87,2 g/mol

M= 87,2 g/mol

CAS-Nr. 926-63-6

CAS-Nr. 996-35-0

Symbols (Safety class):
F Flammable
C Corrosive
N Dangerous for the environment

Applications: Intermediate for the chemical industry, e.g. as a catalyst/hardener for resin-bound foundry cores.

Specification:
DMIPA > 50,0 % (by gaschromatography)
DMPA 40 -50 %
DMPA + DMIPA > 99,0 %
Water < 0,5 % (by Karl Fischer)

Form and solubility: Colorless to slightly yellow liquid, miscible with water and almost all common organic solvents.

Physical qualities:
Changes in conditions
Melting range: approx. -70 - - 40°C
Boiling range: 64 - 67 °C
Flash point: - 27 - -3°C
Density: 20°C 0,71 g/cm³
Critical values of explosion lower/upper 1,0/ 9,0 Vol %
Ignition temperature approx. 165 °C (DMPA)

R-phrases R11 Highly flammable.
R35 Causes severe burns.
R20/22 Harmful by inhalation and if swallowed.
R51/53 Toxic to aquatic organisms, may cause long-term adverse effects in the aquatic environment.

S-phrase(s)
S3 Keep in a cool place.
S16 Keep away from sources of ignition - No smoking.
S36/37/39 Wear suitable protective clothing, gloves and eye/face protection.
S26 In case of contact with eyes, rinse immediately with plenty of water and seek medical advice.
S28.2 After contact with skin, wash immediately with plenty of water.
S45 In case of accident or if you feel unwell, seek medical advice immediately (show the label where possible).
S61 Avoid release to the environment. Refer to special instructions/safety data sheets.

Land transport (ADR , RID)

UN-No. UN 2734 AMINES, LIQUID, CORROSIVE, FLAMMABLE, N.O.S.
Hazard Class: 8
Packing Group: I

Delivery form: 8,0 kg cans ; 140 kg steel drums (code SFR) , Delivery in other forms can be discussed.
Storage: Protect from the effects of heat and direct sunbeam. Keep in a dry and well-ventilated place.